



MONTHLY MEMBERSHIP PROGRESS REPORT

District 201V2

Results as of: 05/31/2019

GMT: ANN ELDRIDGE

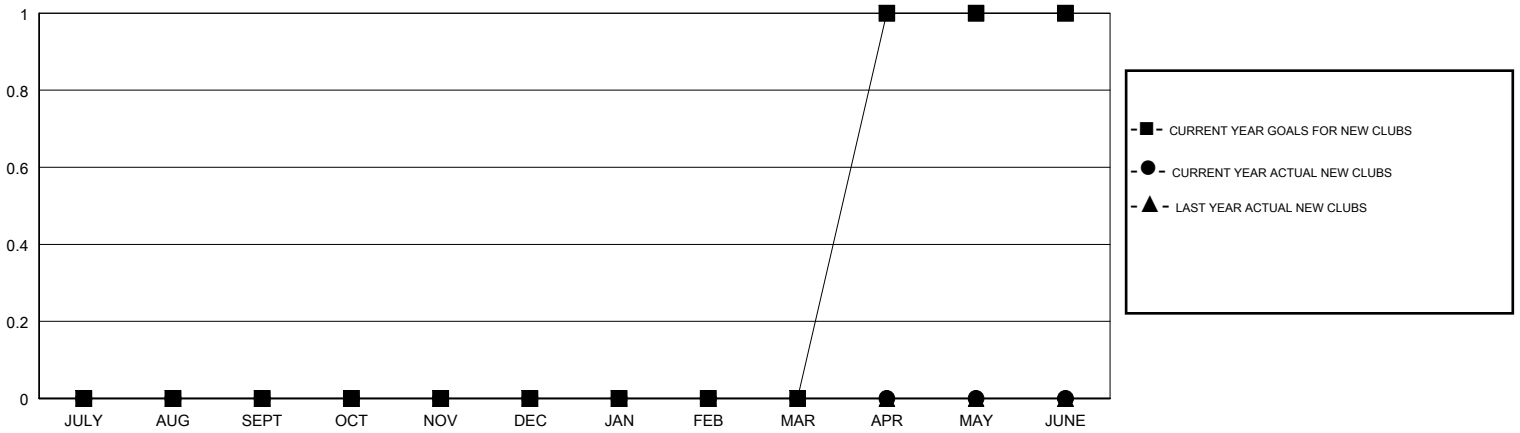
LOCATION AUSTRALIA

GMT CA

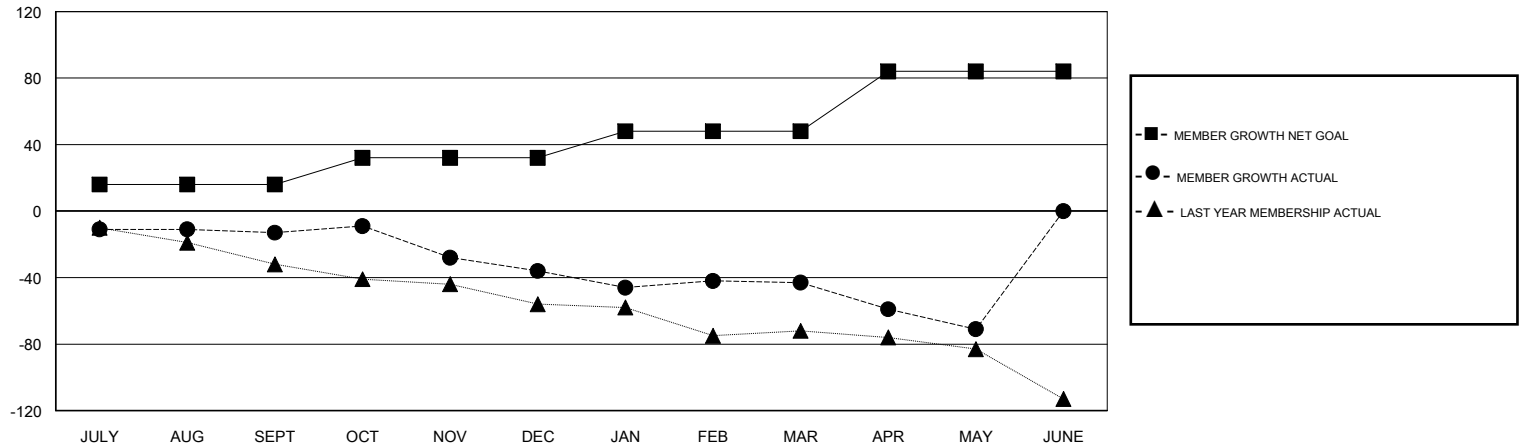
Clubs			
RESULTS FOR 2018-2019			
QUARTER	NEW CLUB GOAL	NEW CLUBS	DROPPED CLUBS
JULY/AUG/SEPT	0	0	1
OCT/NOV/DEC	0	0	0
JAN/FEB/MAR	0	0	1
APR/MAY/JUNE	1	0	0

Members			
RESULTS FOR 2018-2019			
QUARTER	MEMBER GROWTH NET GOAL	MEMBER GROWTH ACTUAL	DROPPED MEMBERS ACTUAL (including transfers)
JULY/AUG/SEPT	16	27	38
OCT/NOV/DEC	16	43	61
JAN/FEB/MAR	16	40	43
APR/MAY/JUNE	36	24	44

GOALS AND ACTUAL NEW CLUBS CUMULATIVE



GOALS AND ACTUAL MEMBERS CUMULATIVE



DROPPED CLUBS: 2	48 CLUBS OF 70 ADDED 1 OR MORE NEW MEMBERS	<u>GENDER DISTRIBUTION</u>	
DROPPED MEMBERS		MALE	1,025 (65.96%)
DECEASED	21	FEMALE	529 (34.04%)
CLUB CANCELLED	0	Women Percentage Fiscal Year Goal: 36%	
OTHER	163	TOTAL FAMILY UNIT MEMBERS	241
TOTAL	184	FAMILY MEMBERS PAYING HALF DUES	121

[CLICK HERE FOR CUMULATIVE MEMBERSHIP DATA](#)